



## HFAD Smoke Detector

KSEN-231

According to SCDF's new Fire Code, Home Fire Alarm Devices (HFAD) are compulsory for new homes or existing homes undergoing fire-safety works from 2018. Designed with consumers' safety and comfort in mind, KSEN-231 reduces many inconveniences with HFADs in the market today.



- **10-Years Lithium Battery**
- **Compliant with EN14604 Standard**
- **Advanced Photoelectric Sensor**
- **Big Self-Test / Hush Button**
- **Small and Inconspicuous Design (<6cm)**
- **Quick Installation Process**



Lightweight and wireless, users can even install the device onto the ceiling themselves! Scan to watch installation guide here.



## HFAD Smoke Detector

KSEN-231

### Overview

The Aztech Kyla HFAD Smoke Detector is a standalone battery powered smoke detector. Which using 3.0V Lithium battery, and can last for 10 years. It utilises a photoelectric sensor that allows it to be more sensitive to detecting slow smouldering fires which generates thick black smoke and little heat.



Main Features	
Power supply	3.0V (build in lithium battery)
Standby current	$\leq 3\mu\text{A}$
Alarm current	$\leq 200\text{mA}$
Sound Level	$\geq 85\text{ dB(A)}$ at 3 meters
Smoke Sensor	Photoelectric Sensor
Hardware	<ul style="list-style-type: none"> <li>Microchip RE46C191</li> <li>IR Emitter: OSRAM SFH4341</li> <li>Photodiode: Everlight PD638B</li> </ul>
Physical Specifications	
LED Indicators x 3	Smoke warning : Red LED Rapid flashing (Every 1 seconds)  Hush mode : Red LED on 10ms every 10 seconds (9 minutes in smoke alarm hush)
In standby mode there are no active visible or audible indications which can be intrusive to the householder. To confirm that the Alarm is operational perform a weekly button test.	
Button x 1	Test - Keep pressing more than 1s to alarm  Hush button - Press once to hush when there is alarm
Hush function : When it is smoke alarm and press button to hush, RED LED will keep blink every 10s for 9 minutes When it is in low battery mode, sound alarm will off for 8 hours and 9 minutes for smoke hush.	
Sound Chamber x 1	31mm buzzer Low battery and Faulty detected: on 10ms every 43 seconds
Dimensions	$\varnothing 50.8\text{mm}$ . H43.6mm

Specifications may change without prior notice

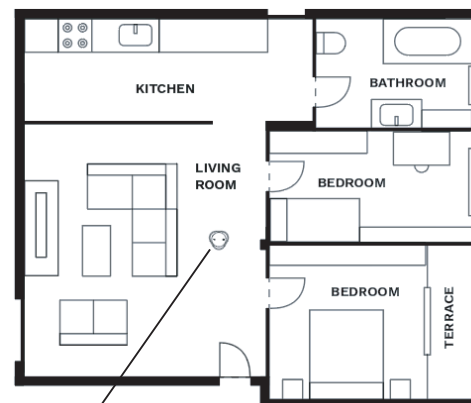
### Regulatory Approvals

Regulatory Compliance	EN 14604
-----------------------	----------

### Environmental

Temperature	Operating - $0^{\circ}$ to $45^{\circ}\text{C}$ Non-Operating - $-25^{\circ}$ to $70^{\circ}\text{C}$
Humidity	15% to 95% Relative Humidity (Non-Condensing)

### Installation setting and location guide



Smoke Sensor Location

#### NOTE

- Smoke alarm should be installed on ceiling along an escape route (e.g living room)
- To prevent false alarm, avoid installing in kitchens and bathrooms.
- For multi-storey homes, minimum 1 smoke alarm per storey is recommended.
- Remove "silicon protection cover" before use.

